



The UK's number 1 school \* in the UK's number 1 city \*\*

Accredited by the



for the teaching  
of English in the UK

\* According to the EL Gazette rankings based on  
British Council inspectors' publishable statements

\*\* According to The Sunday Times' survey 2017

# The School

Established in 1969, The English Language Centre Bristol is a family-run school and a Centre of Excellence. We offer intensive General English and Examination Preparation courses. We have been inspected by the Independent Schools Inspectorate (ISI), accredited by the British Council and we are licensed by UK Visas & Immigration to enrol international students under Tier 4 of the Points Based System. The school is a member of The English Network, a group of 10 independent schools that share best practice and have a reputation for quality and personal service.



Pembroke House



Abon House

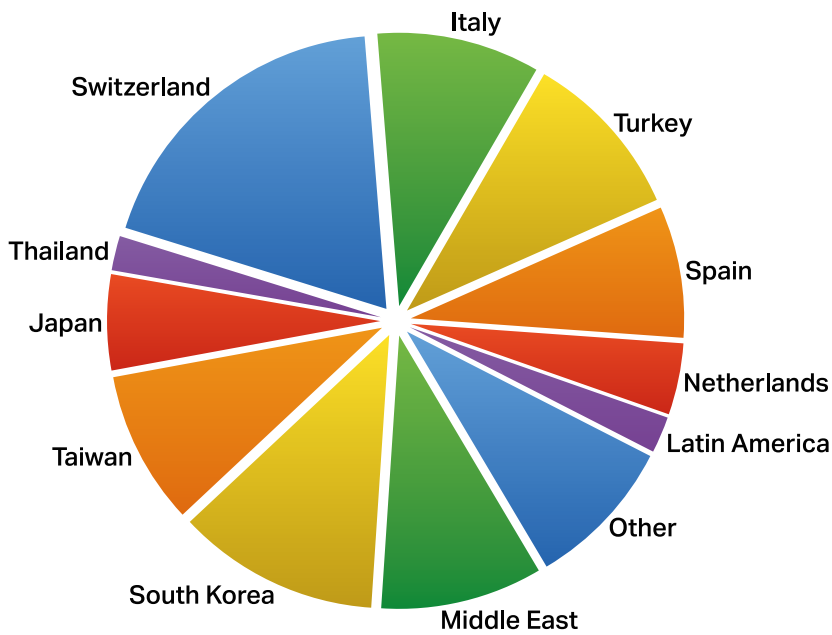


Pembroke House garden

The school is located in two fine old buildings close to the University in Clifton, one of Bristol's most attractive areas.

## Student Nationalities 2017

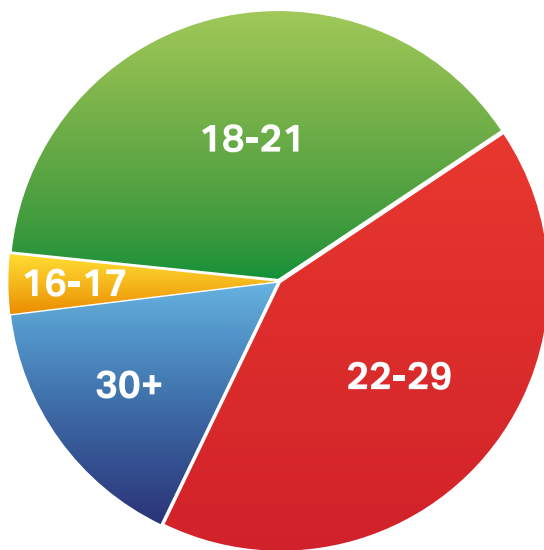
Percentages fluctuate according to season



We believe that personal care and attention are essential and we will do everything we can to ensure that your stay in Bristol is one of the most productive and enjoyable times in your life.

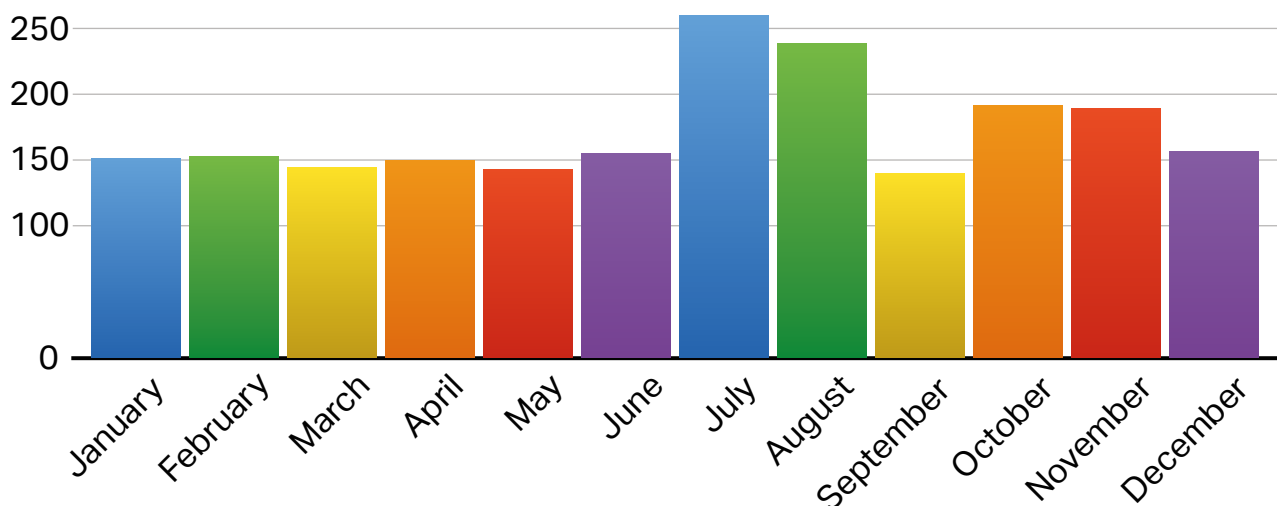
## Student Ages 2017

Average age: 23 Minimum age: 16 No maximum age



## Student Numbers 2017

An average of 172 students from 25 different countries.



# Bristol

With a population of around 450,000 and two major universities, Bristol is the second largest city in the South after London, which is less than two hours away.

Bristol is well-known for its theatres, shopping, music scene and street art.

Recent awards:

2017: Best UK City To Live In (Sunday Times)

2015: European Green Capital



Park Street



## Flights to 35 countries



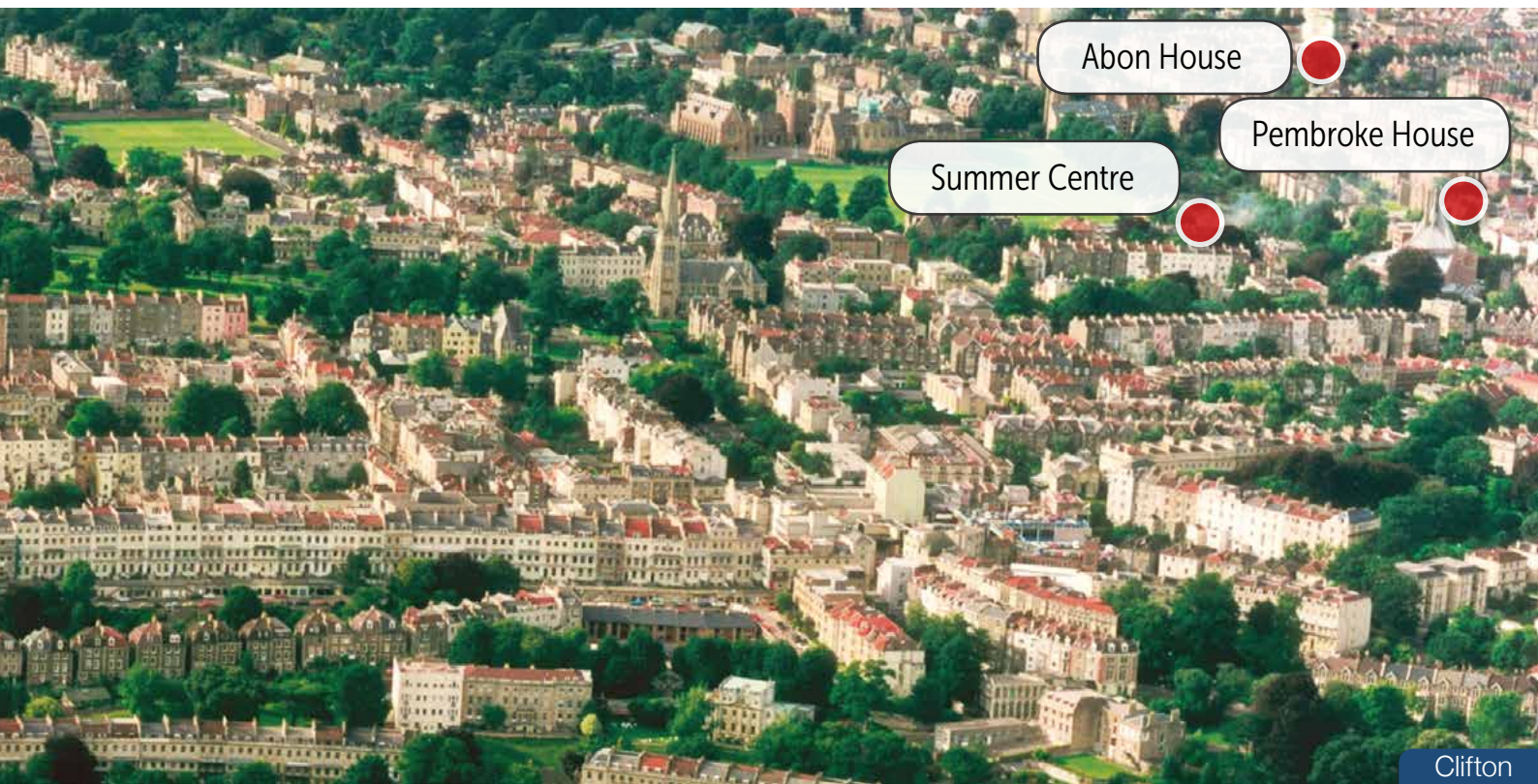
Bristol International Airport has flights to 117 cities in 35 countries.

As well as making it easy to get here, it offers a great opportunity to visit other European destinations.

Bristol has all the attractions of a major city, but it is easy to live here as most places of interest are located within walking distance and you are not dependent on public transport.

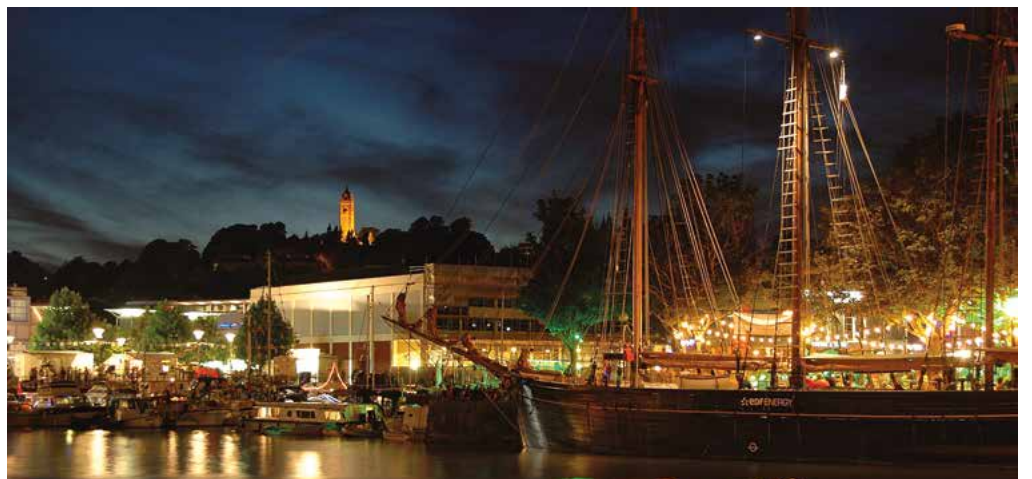


Cabot Circus shopping centre



Clifton

Exciting nightlife and harbourside



# Courses

- Courses include 21 full hours of classroom time per week plus daily homework.
- There are 7 levels from A2 (Elementary) to C2 (Advanced), with several classes at most levels.
- On the first day, we test you so that we can place you in a class at the right level.
- Average class size: 10. Maximum: 14.
- As part of your course, depending on your level, you can prepare for the Cambridge English First, Advanced and Proficiency exams, IELTS or BULATS.



## Levels

CEF *	Level	IELTS **	Cambridge Exam **	
A2	Elementary Pre-Intermediate			Basic user
B1	Intermediate	4 - 5	Cambridge English: Preliminary (PET)	
B2	Upper Intermediate	5 - 6.5	Cambridge English: First (FCE)	Proficient user
C1	Pre-Advanced	7 - 8	Cambridge English: Advanced (CAE)	
	Advanced			
C2	Advanced +	9	Cambridge English: Proficiency (CPE)	

\* Common European Framework      \*\* Details of exam dates and fees are in the enrolment form.

## Included in the programme

- Personal study programme with 4 hours' optional self-study per week.
- Course book every 3 months, supplementary teaching materials and a leaving certificate.
- E-learning service from the moment you enrol until 3 months after you leave.
- On two afternoons a week, if your level is B2 (upper-intermediate) or above, you can choose from a range of electives including Business English, Academic English and Sports. During this time, lower level students focus on developing communication skills.
- After classes have finished, optional free language activities are arranged twice a week including Conversation Club, Job Club, Singing Club and Friday Film Club.



## Sample Timetable

28 lesson (21 hours) a week

9.15	10.00	10.45	11.15	12.00	12.45	14.00	14.45	15.30	15.45	16.45
Grammar using a recently published course book	Listening/ Pronunciation practice can include work in the multimedia centre	Break	Reading skills & vocabulary building	Speaking skills & vocabulary building	Lunch Break	Monday & Wednesday Writing / exam practice	Tuesday & Thursday Levels A2 - B1 Speaking & pronunciation	Monday & Wednesday Listening & study skills	Tuesday & Thursday Levels B2 - C2 Electives	Optional Supervised self-study Monday-Thursday 2 activities a week including: Conversation Club Job Club Singing Club and Friday Film Club

# Examination Preparation

- Cambridge English: First (FCE), Advanced (CAE), Proficiency (CPE), IELTS and BULATS.
- Minimum period of enrolment: 4 weeks.
- You should be at least B1 level before joining an IELTS class or B2 before joining a Cambridge First class.
- 21 hours per week (including elective class).

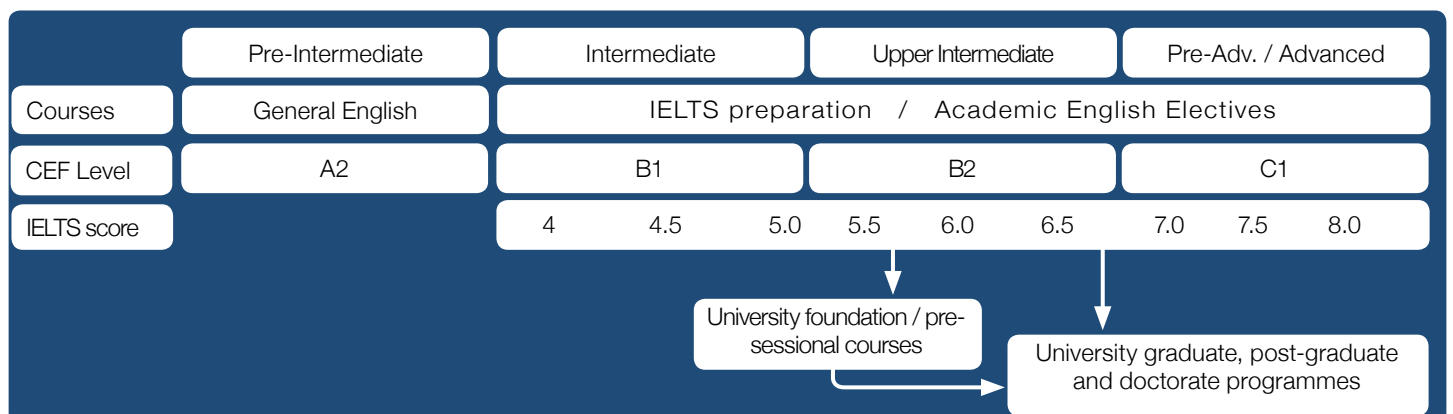


Supervised self-study in Abon House Multimedia Centre

## IELTS - How long will it take?

You generally need an IELTS score of 6.5 before going to university or 5.5 if you wish to take a foundation or pre-sessional course.

Based on our students' results, it takes around 12 weeks of full-time study to improve your IELTS score by 1 point.





# Job Club

- Bristol is a relatively wealthy city and has the highest employment rate amongst the UK's core cities.
- Students from the EEA (European Economic Area) and those with a Tier 5 Youth Mobility Scheme visa have the right to work.
- ELC runs a free Job Club giving advice and the language needed to help you find casual and part-time employment.
- ELC Bristol is able to put you in contact with a company which organises professional internships in Bristol and other cities including London, Oxford and Brighton.



The school has a great team of qualified, experienced teachers who are dedicated to helping students at all times.



“

I really enjoy my classes because the teachers are amazing and I have made lots of friends from different countries.

I love the social programme because Bristol is an exciting city and there is so much to do here!

”

# Summer Courses

The summer courses run from June to September. During July and August we open an additional study centre in Clifton College with spacious classrooms, a beautiful garden and wonderful facilities.

The courses include 21 full teaching hours per week; they are run in the same way as our courses throughout the year with intensive General English and examination preparation available together with additional language activities and a varied and exciting social programme.

The summer courses are suitable for motivated students aged 16+.



The summer centre has a beautiful garden



Summer Centre garden

The summer centre is located in Clifton College, 2 minutes' walk from Pembroke House.



Summer Centre cafeteria

During July and August, lunch is an option in the Summer Centre for all our students.



You have access to Clifton College's gym and swimming pool throughout the year.

Breaktime in Abon House



During the summer courses, you may be taught in the Summer Centre, Pembroke House or Abon House.



Summer Centre classroom



Pembroke House

# Social Programme

An exciting social programme is arranged every week of the year. It includes regular sports, a minimum of two evening activities a week and an excursion on Saturdays.

The programme is organised by our teachers and is a great way to see the country, explore the local area, make new friends and practise your English.



## Free Activities

May include: School Parties, Film Club, Conversation Club, Live Music at the Old Duke, Banksy Street Art Trail, Clifton Pub Tour, Karaoke, Bristol Balloon Fiesta, Bristol Harbour Festival

## Paid Activities

May include: American Pool and Darts (£3), Opera at the Hippodrome (£10-15), Laser Fusion (£7), Tour of BBC Studios (£8), Golf (£8), Bowling (£8), Salsa (£3), Evening Harbour Cruise (£10)

## Weekend Excursions

May include: London (£20), Oxford (£20), Bath (£20), Stonehenge and Salisbury (£30), Cambridge (£25), Longleat House and Safari Park (£30)

\*Prices are subject to change





Sports are always popular



Football with the teachers



Oxford

With more than 50,000 students, Bristol is well-known for its night life and music scene.

You can use the facilities of the University Students' Union Building, which is located only 5 minutes' walk from Pembroke House.

A special advantage for ELC students is that during the academic year, you can also join the University Students Union's clubs and societies - the perfect way to make English-speaking friends!

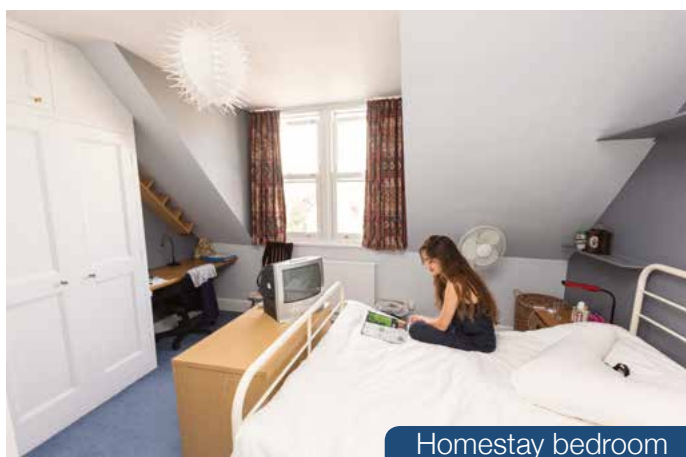
# Accommodation

We can arrange your accommodation in single rooms, usually within walking distance of the school. If you choose to travel by bus, the cost of a weekly bus pass is currently £12.00.

- Homestay. Includes bed, breakfast and an evening meal.
- Independent student houses and flats (self-catering).
- Goldney Hall University Residence (self-catering). Available July – August.



Staying with one of our caring homestays represents good value for money and is a great way to experience the English way of life.



Homestay bedroom



Goldney Hall



## Message from John and Margaret Duncan Principal and Director

*We would love to welcome you to ELC Bristol. It is a family-run school which prides itself on caring for each individual student. If you come, our team of dedicated teachers and staff will do everything they can to ensure that you have one of the most enjoyable and productive times in your life.*

*John and Margaret*



### A few good reasons for studying at ELC Bristol

- It is the number 1 language school in the UK according to the EL Gazette's rankings, based on the British Council inspectors' publishable statements.
- Our dedicated teachers have an average of more than 20 years' experience and our Cambridge exam pass rates are better than the national average.
- Bristol is the number 1 city in the UK, according the Sunday Times Survey (2017). Most of our accommodation and many attractions are within walking distance of the school.
- Our students can join the University Student Union's clubs and societies – the perfect way to make English friends.

# How to get here

## From Bristol Airport

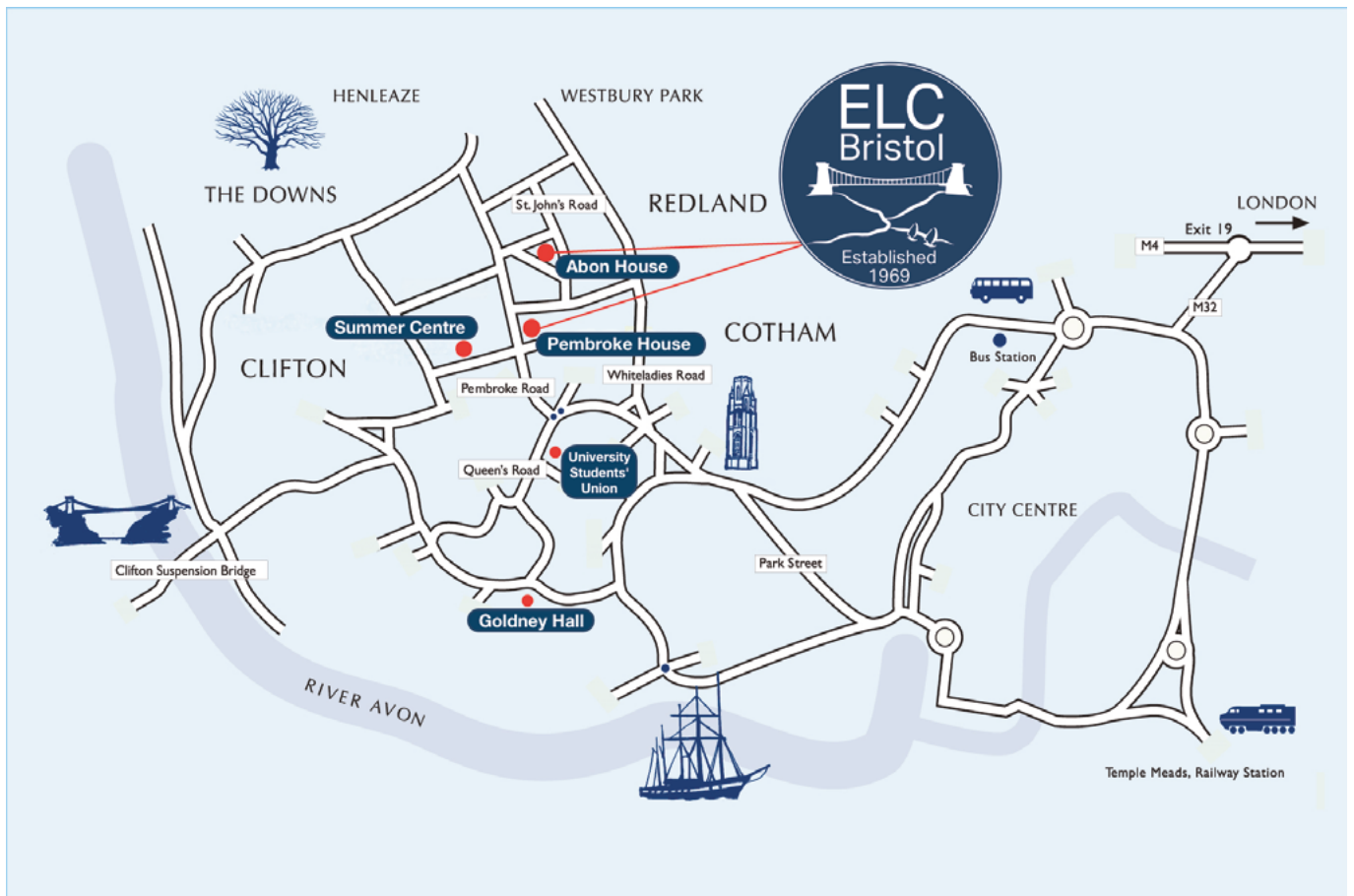
  25 minutes

## From London Heathrow

 2 hours

## From London Paddington

 1 hour 40 minutes



ELC Bristol Ltd., Reg No: 10027743 (England & Wales)  
44 Pembroke Road, Bristol, BS8 3DT, UK

Tel: +44 117 970 7050 | Fax: +44 117 923 9638 | info@elcbristol.co.uk | www.elcbristol.co.uk

050218